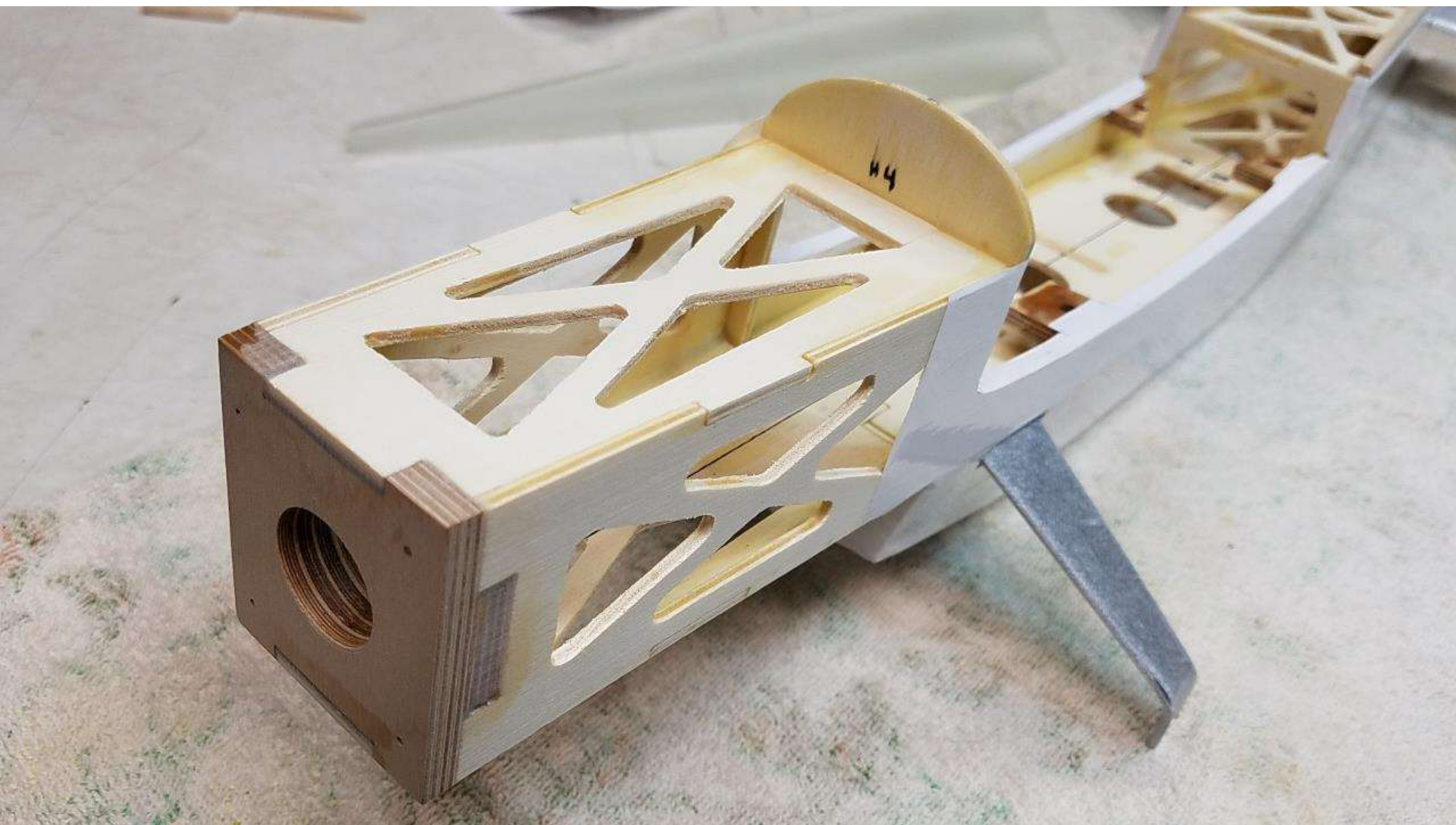


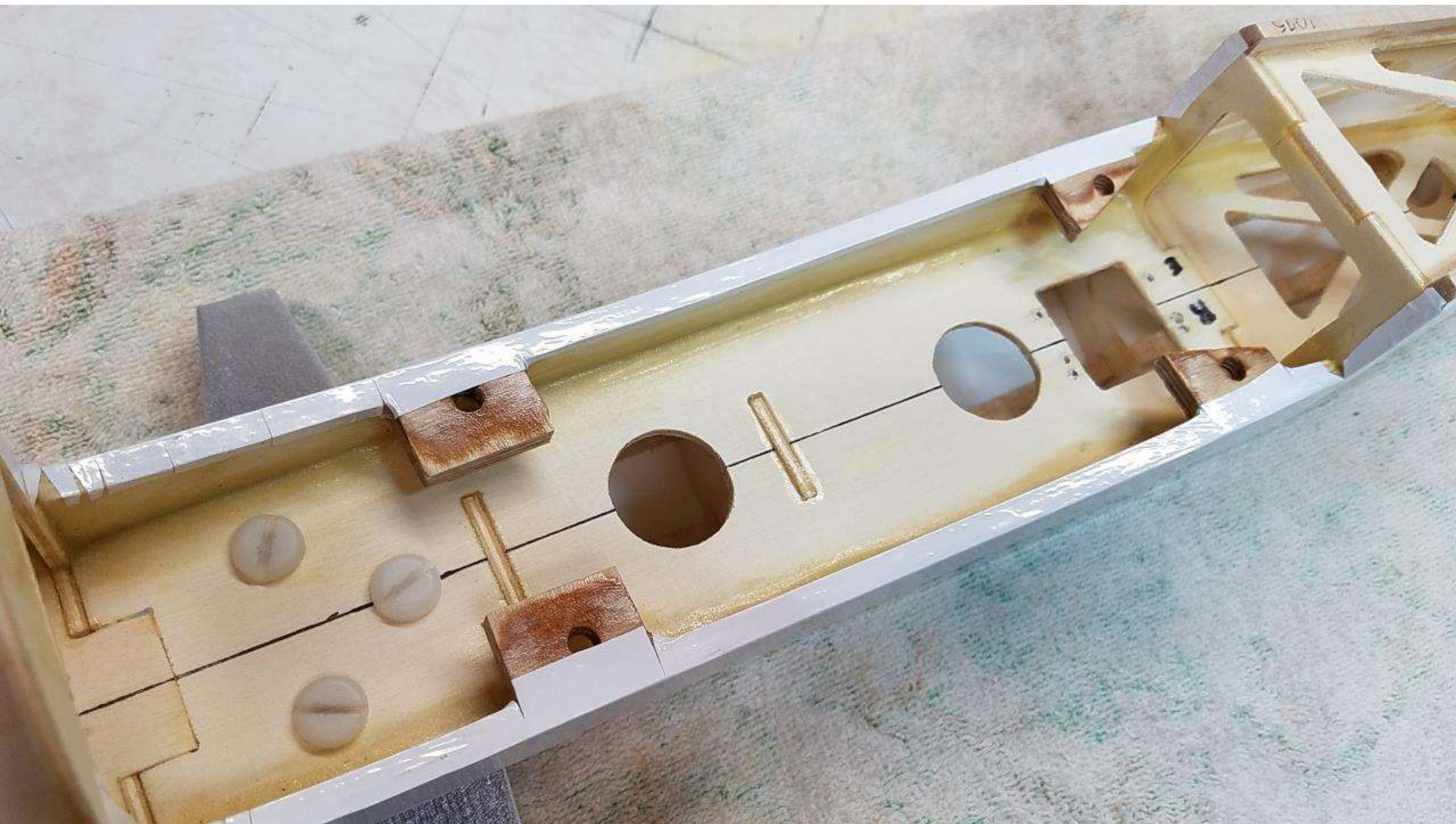
Matney Models

Miss Lynn Build

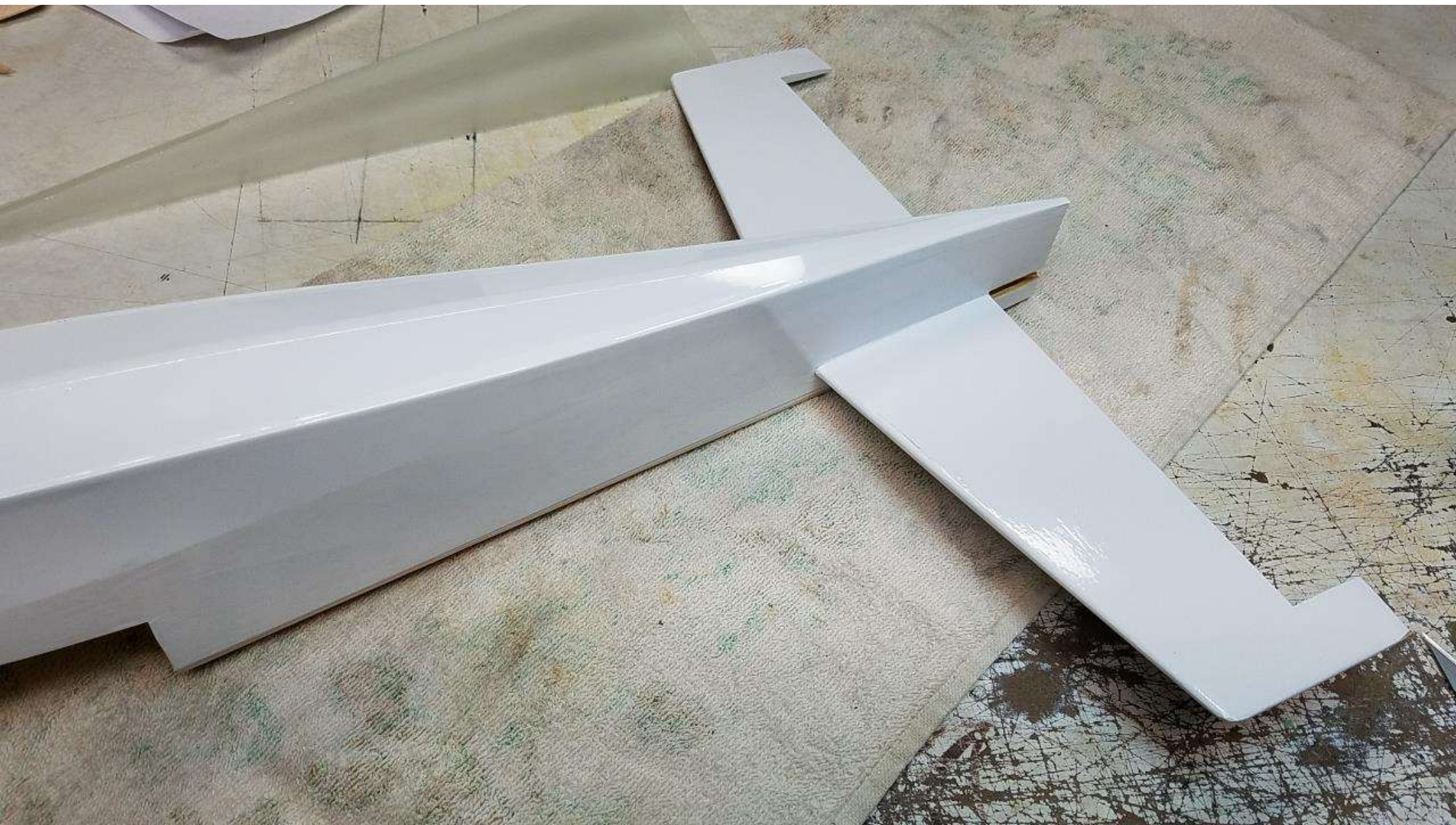
Built by Steve Saghy

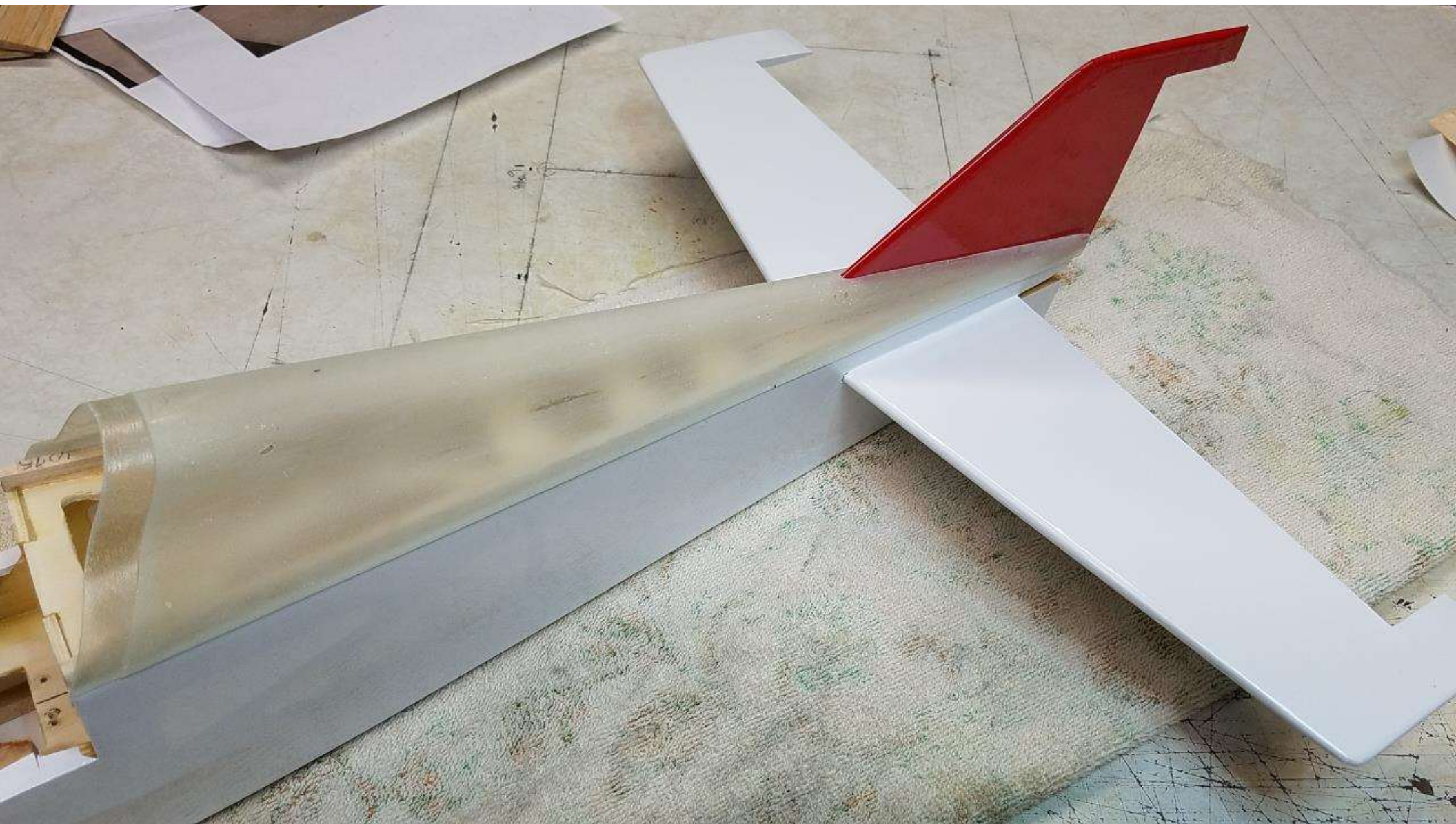


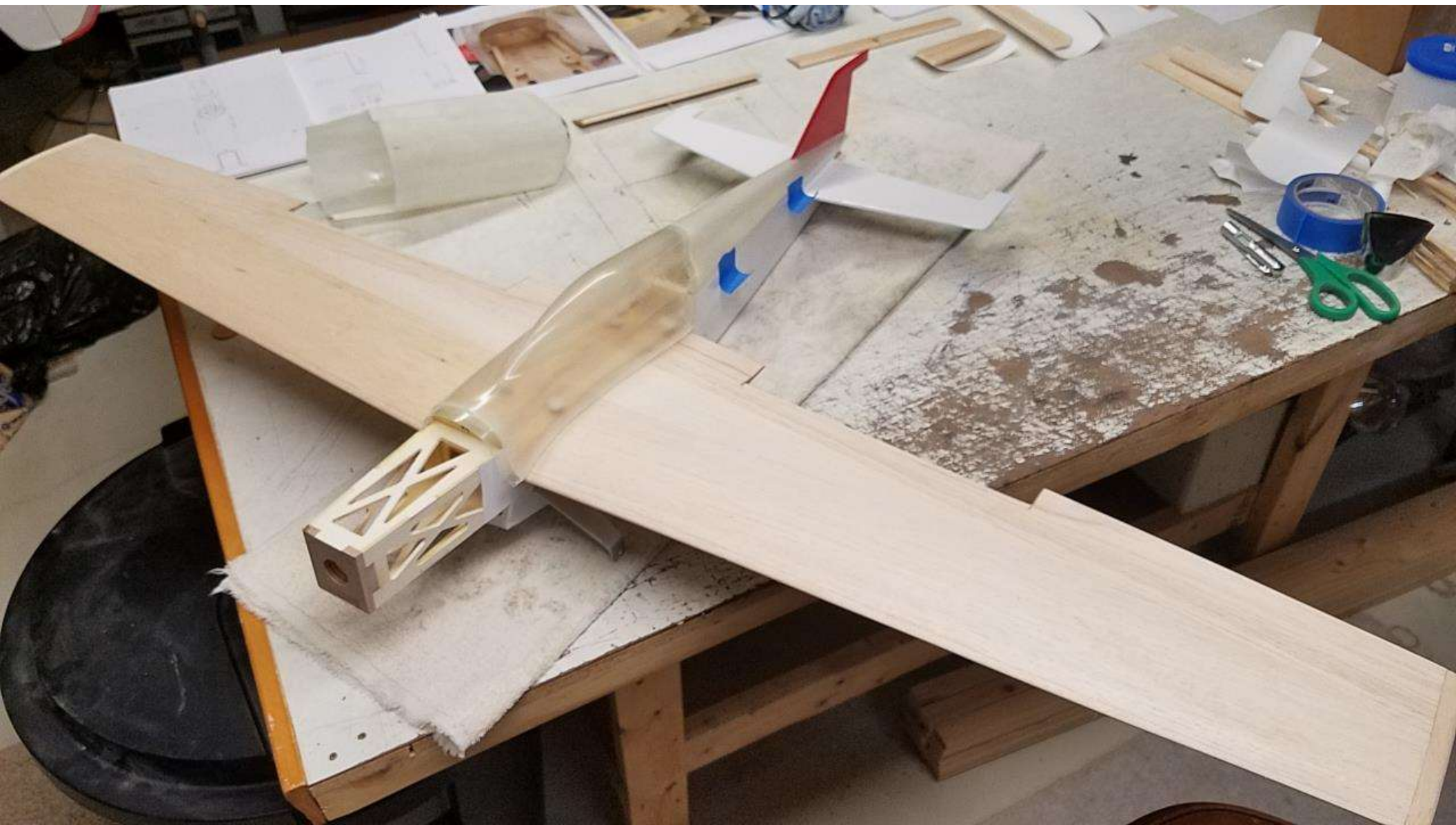


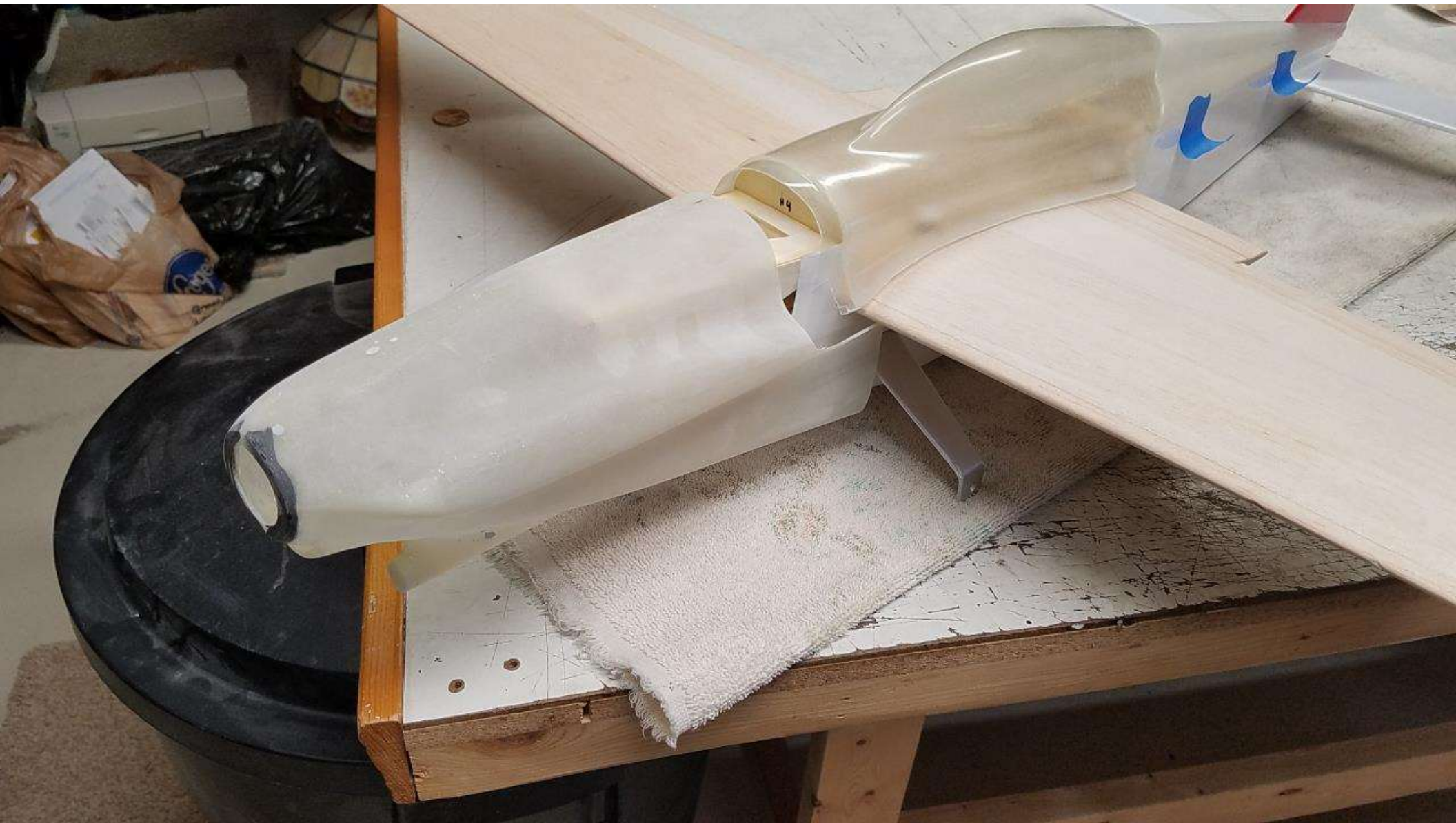












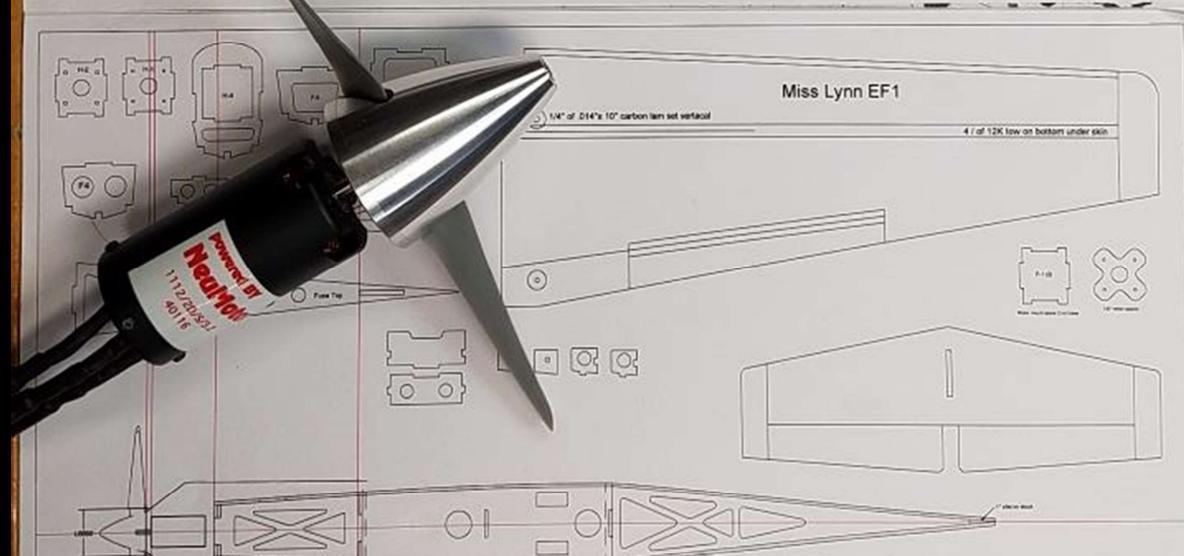


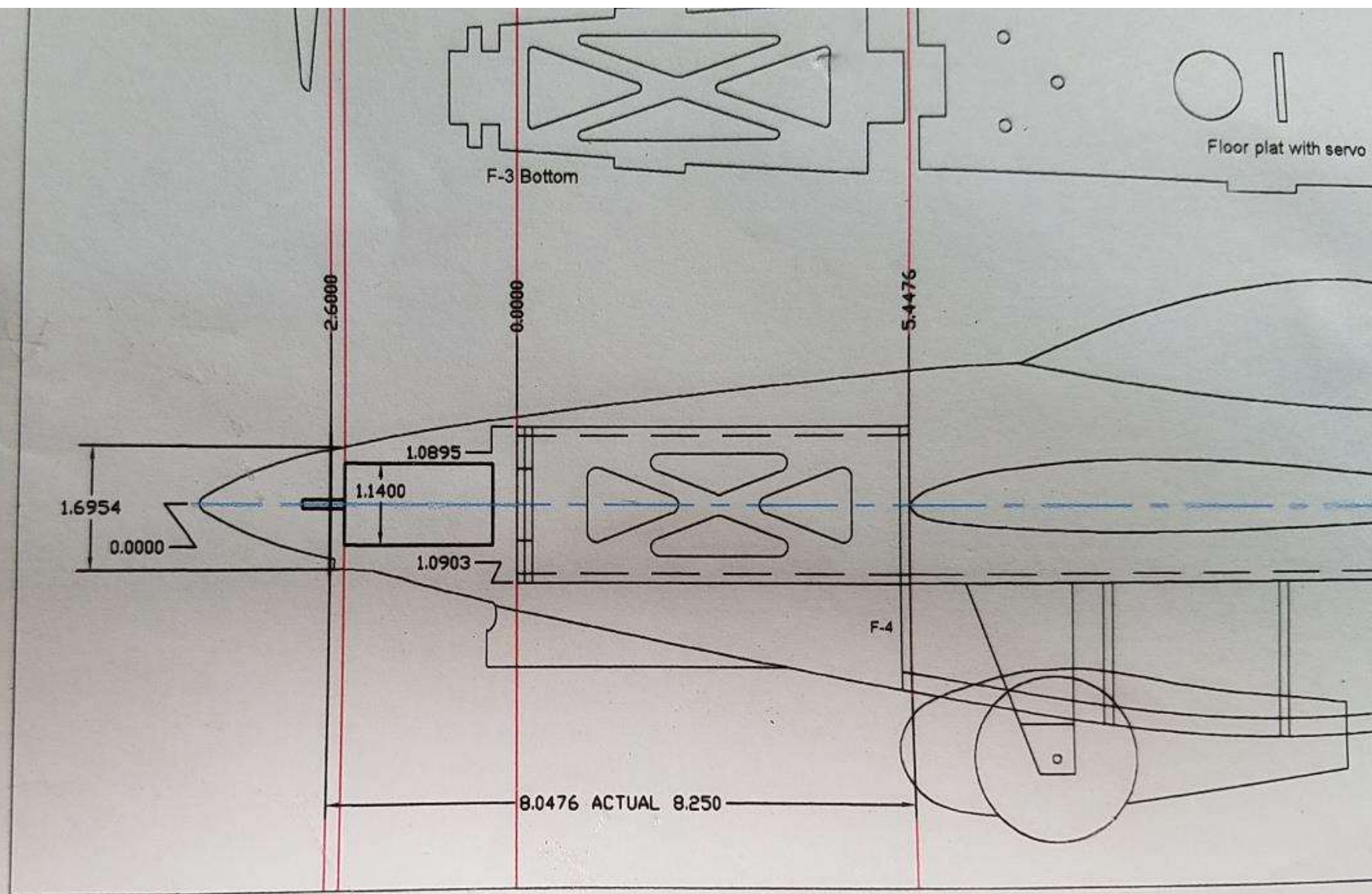
0.0000
0.1534
0.4438
0.5218
0.7805
0.9655

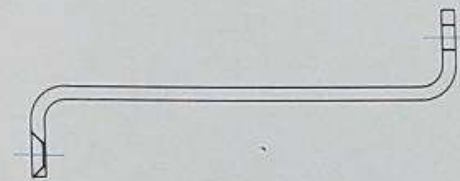
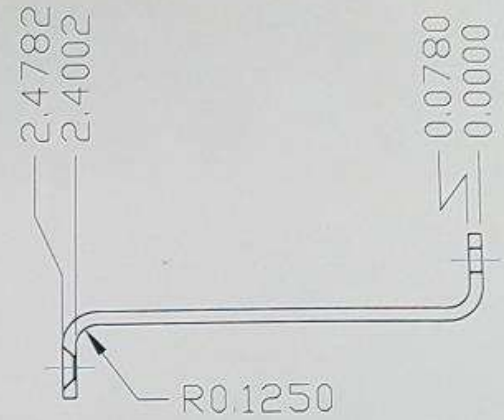
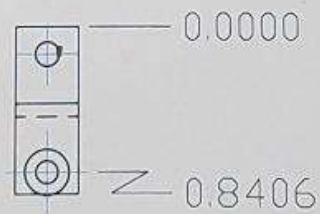
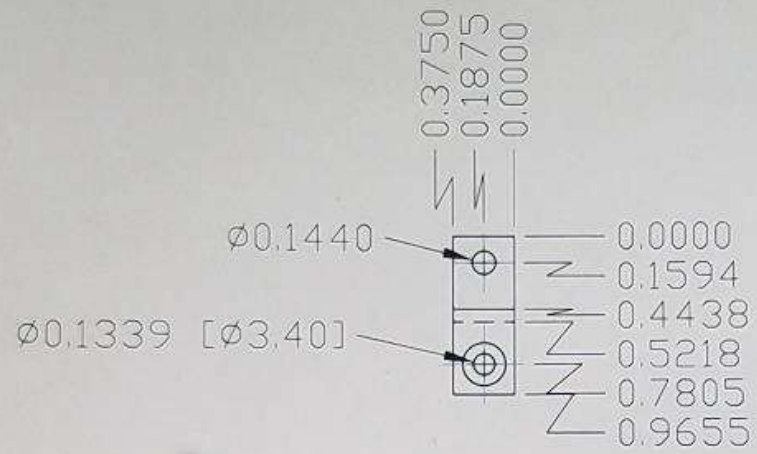
0.0000
0.8406

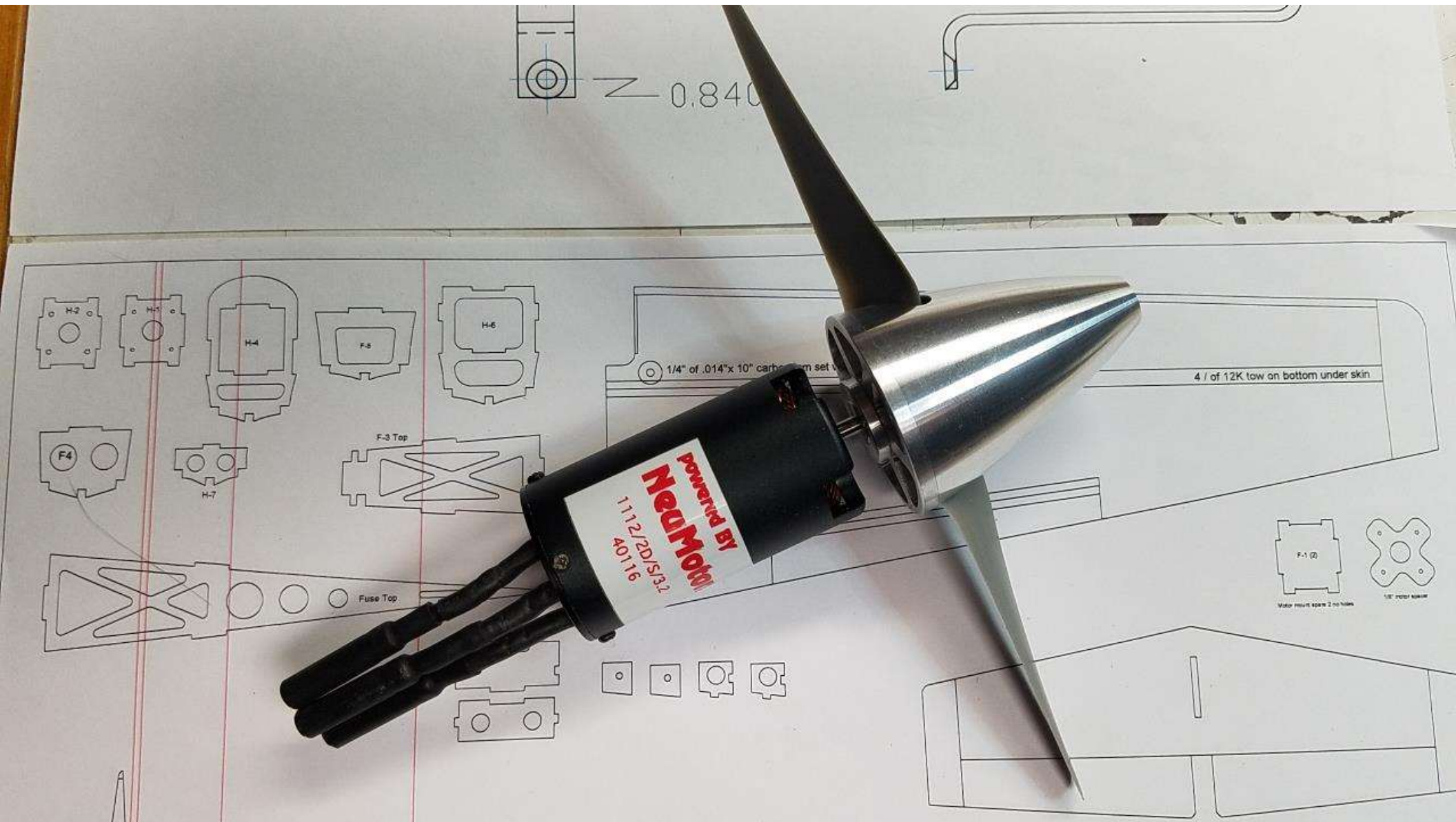
0.1440
0.1339 [0.3.40]

R0.1250









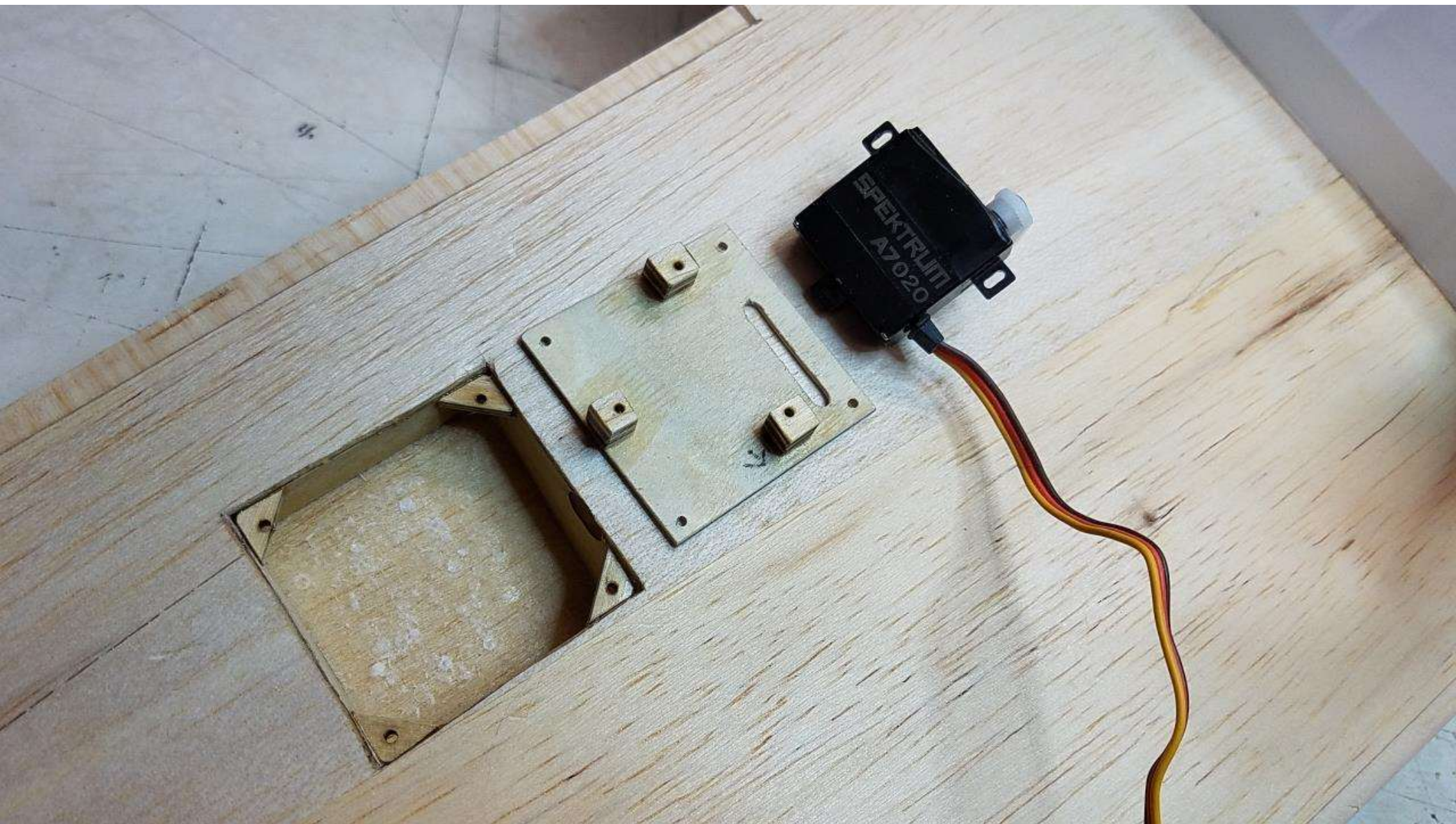


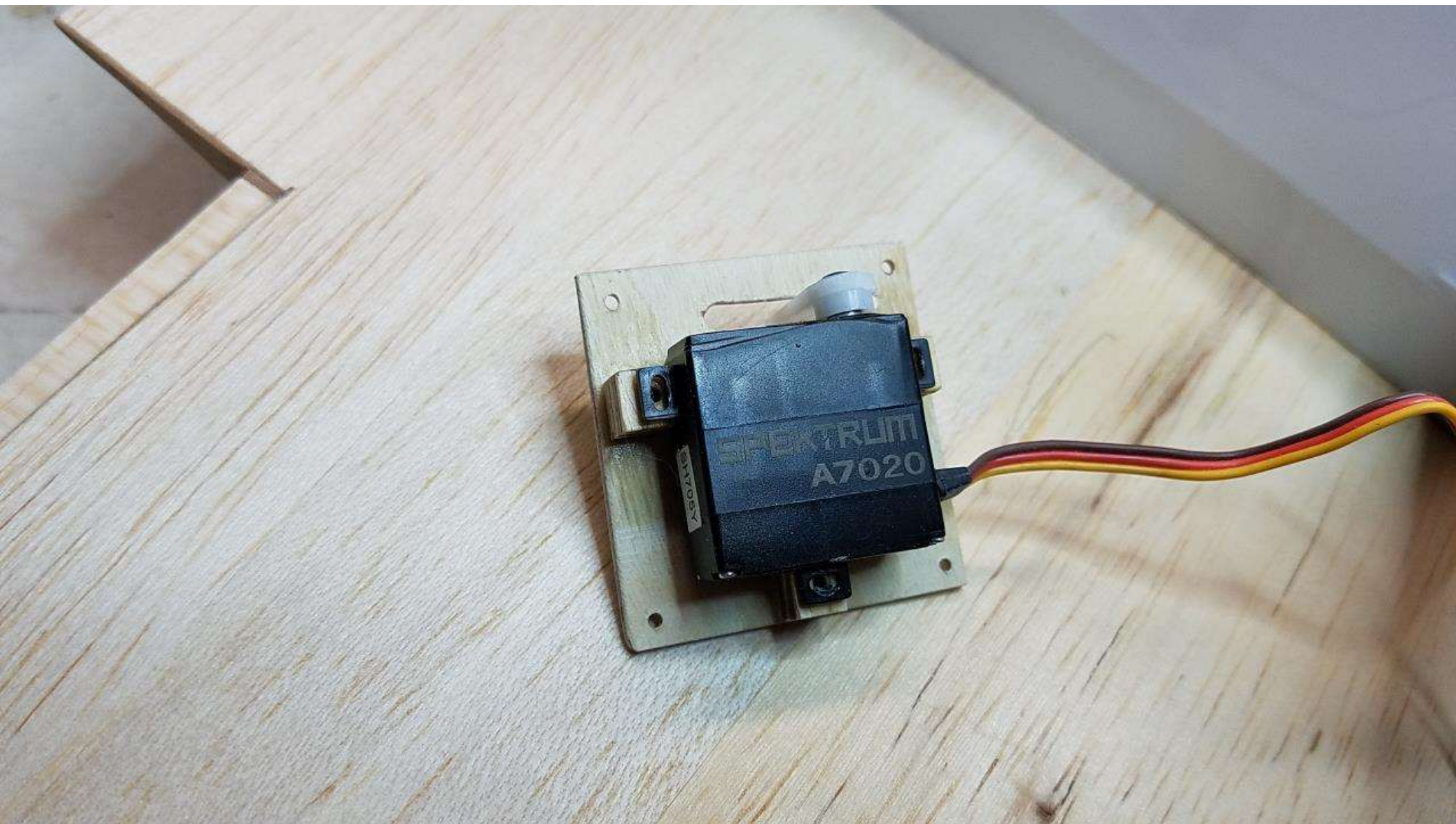


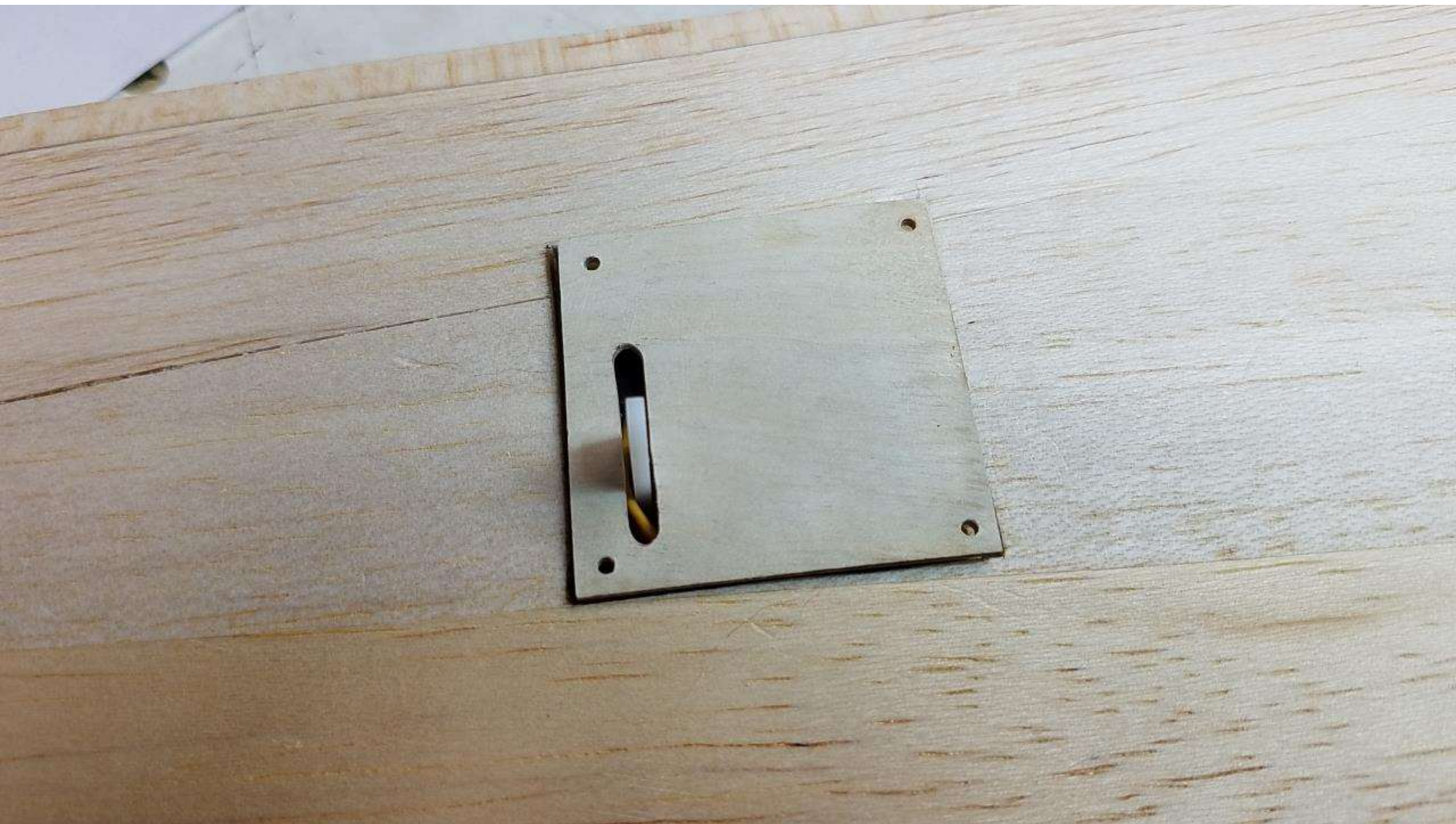






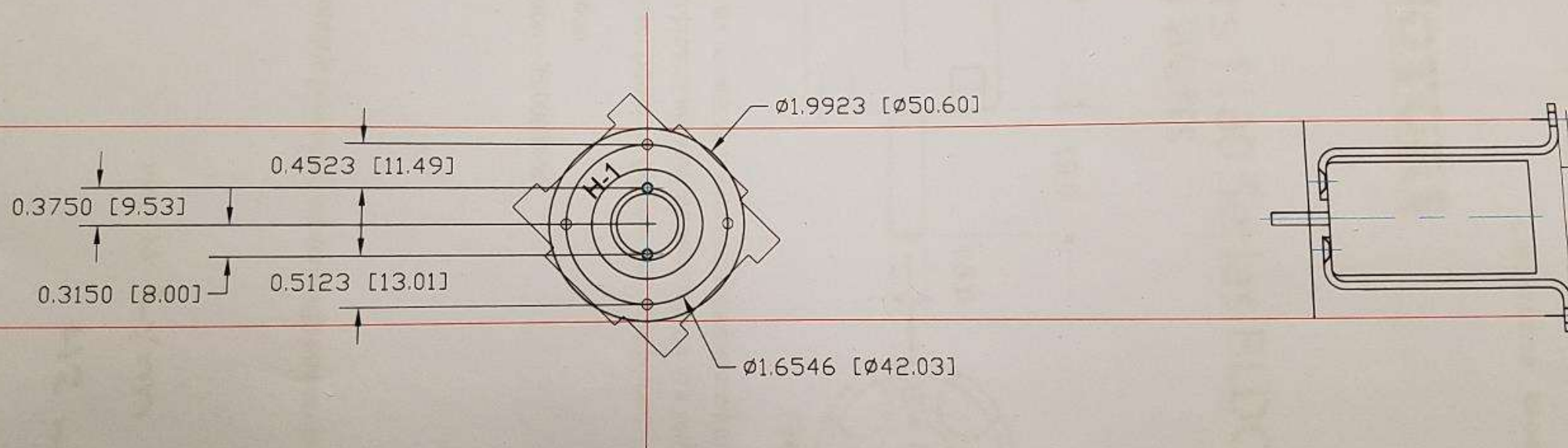




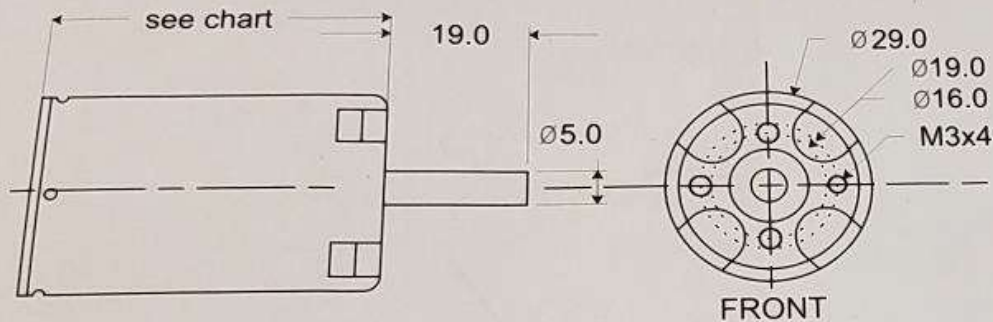








NeuMotors 1100 Series BLDC Motor 200-1,400 Watts



Neumotors 1100 series brushless motors are manufactured in a wide variety of lengths and winds to provide increasing power ratings at a number of voltages. Select the desired motor power range from the table below.

- Inrunner construction
- High speed operation - 35,000 RPM
- 8 poles / 24 slots
- 5mm shaft

Options:

May be mated with integral **gearboxes** for very high power-to-weight drives.

